

# sonuus®

Music Products  
Designed in the UK

## Product Catalogue 2015



# sonuus®

Launched in 2009, and based in the UK, **sonuus** is the brainchild of two guitar-playing talented engineers. After more than a decade of developing professional musical products (both hardware and software) for several well-known, world-leading music brands, they decided to create their own brand that would let them pursue more guitar-focussed products.

“In the 1990s I developed an innovative and unique proprietary pitch-detection algorithm that was (and still is) both faster and more accurate than anything else available. After a year of refinement and optimisation, this formed the basis of our first pitch-to-MIDI product.

A key aspect of our products is simple, clear, easy-to-use interfaces where complexity is hidden and performance and control are not sacrificed. We do the engineering so you can make music.

Great products are only one half of the story. We pride ourselves on customer support that is second to none with attentive support direct from the founders, engineers and key distribution partners. So when you buy a **sonuus** product, you get more than an innovative gadget: you join our community along with other like-minded musicians from students to A-list rock stars.”

Dr. James H Clark, co-founder

## Technology

### The leader in pitch-to-MIDI conversion

Our unique proprietary pitch-tracking technology has enabled us to create the world's first Universal MIDI Converters. Previously MIDI guitar required a pickup on each string (a hex pickup) so you either needed a special guitar, or you had to install a special pickup onto your guitar.

A Universal MIDI Converter allows any guitar (in fact, any tuned instrument) to become a monophonic MIDI instrument. By simply connecting the output of a regular guitar or bass to a **sonuus** MIDI converter, you can instantly start playing MIDI gear.

Why monophonic? By focussing on single notes, it is possible to get the fastest MIDI conversion possible, often converting the notes you play to MIDI within one vibration of the string. Moreover, this allows the fastest, most accurate pitch-bend detection to be done. In fact, the pitch-bend detection is so good it is more precise than many guitar tuners!

**sonuus** pitch-detection can be summed up in three points:

- Fastest tracking (the laws of physics stop it going any faster)
- Most precise (robust note detection and pitch accuracy)
- Most musical (nuances of playing are converted to MIDI)



# &

## Innovation

At **sonuus** we are not constrained by the limits of convention: we look for new and better ways to do things.

A good example of this is our patent-pending pedal sensor, developed for our effects pedals. We rejected potentiometers (used in most footpedals) because they wear out and become scratchy, and we rejected optics and magnets because of their limitations.

We wanted a pedal that combined responsiveness, fine precision control and inherent robustness. This didn't exist, so we invented it.

The **sonuus** pedal sensor is unique.

We invented the pitch-wah, a new wah-wah effect where bending notes lets you wah automatically.

We invented FluidDynamics™, the pedal-controlled compressor: other compressors are on or off, ours gives you continuous control letting you vary the compression on the fly.

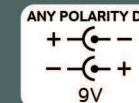
We invented a transparent-true-bypass switching circuit using ultra-reliable relays and a silent-switching circuit. This gives all the benefits of true-bypass (the effect is completely out of the signal chain when bypassed) with none of the pitfalls (unreliable multi-pole footswitches that pop and click when switched).

To make using our pedals as easy as possible, any 9V DC power supply can be used, regardless of polarity — you don't have to worry about damaging the pedal with the wrong polarity.

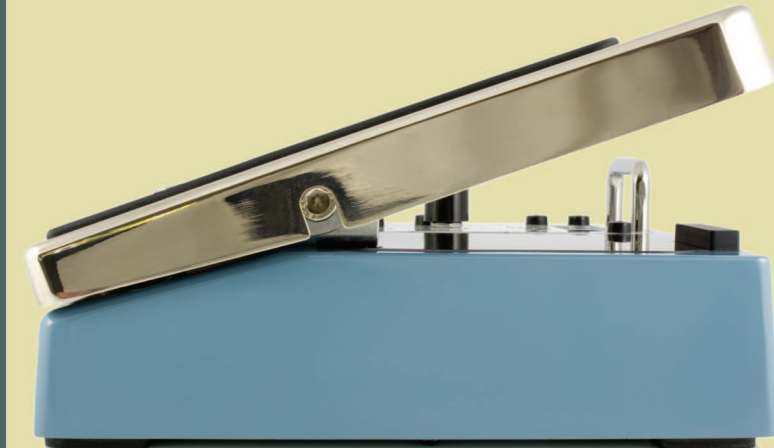
Good analogue effects sound great, but digital effects are convenient. Our Pure Analogue | Digital Control system combines the best of both giving you uncompromised sonic quality with convenience and control.

Many innovations in **sonuus** products are not immediately obvious and are hidden in the electronic circuit design or in the software. These innovations combine to give **sonuus** products their uniqueness and unrivalled quality.

TRANSPARENT  
True Bypass



PURE ANALOGUE  
DIGITAL CONTROL





# G2M

## Universal MIDI Converter Guitar, Bass, Wind & Voice to 5-pin MIDI

The **G2M** brings affordable and reliable MIDI capability to any guitar, bass guitar or wind instrument. Simply connect your instrument to the input jack and connect a MIDI synth or computer to the MIDI-OUT. Instantly you have turned your instrument into a monophonic MIDI instrument. This is as plug-and-play as it gets.

Featuring a high-impedance (10M $\Omega$ ) input circuit and a THRU connection to connect to your amp or other effects pedals, the **G2M** won't sap your tone. You can then easily combine MIDI sounds with your normal sound for some exciting musical possibilities.

Precision pitch-bend tracking ensures that brass and woodwind MIDI instruments such as trumpet and sax sound much more realistic because your fingers can create the same natural phrasing and vibrato. The result is amazing sounds that can't be done on a MIDI keyboard.

The built-in **PULSAR** tuner uses the power LED as a tuning indicator. This innovative tuner gives you a fast and accurate way to tune your guitar or bass.

- Very low latency and very fast tracking (the fastest on the planet)
- Precision pitch-bend ( $\pm 2$ ,  $\pm 5$ ,  $\pm 12$ ,  $\pm 36$  semitones, <1cent error)
- Chromatic mode
- Robust note detection — minimises wrong notes
- MIDI input (via breakout cable) for live control (hold, sustain and volume)
- Built-in tuner for standard guitar and bass tuning
- THRU output to keep your instrument connected to your amp
- No instrument modifications or special pickups required
- Compact, lightweight and portable
- Battery-powered (1xAA) or use a standard 9V DC supply
- Note detection range = A0 to C7
- MIDI latency = 5ms (E6), 19ms (E2), 32ms (E1)



Quick Start Video Guide  
<http://sonuus.com/QLE>

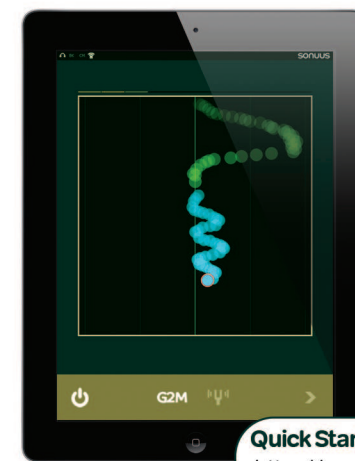


**V3** ENHANCED PERFORMANCE  
NEW FEATURES  
GUITAR | BASS | WIND | VOICE

## Wireless MIDI Guitar for iPhone and iPad

The same pitch-to-MIDI technology used in **sonuus** hardware products

# G2M app



Quick Start Video Guide  
<http://sonuus.com/QLB>



Like the **G2M**, the **G2M app** lets you turn any guitar into a solo MIDI guitar — it's universal. Simply install the app and connect your guitar to your iPhone, iPad or iPod Touch. In addition to the superior MIDI tracking of the **G2M**, the **G2M app**:

- Has very low CPU usage, so it can run in the background without affecting other music apps.
- Can send MIDI to other apps (synths), over Wi-Fi, or to MIDI interfaces connected to the dock connector.
- Displays a glorious user-interface showing you the real-time MIDI messages as they are sent.
- Supports bass and guitar with a note detection range spanning from E1 (low E on a 4-string bass) to Bb6 (higher than a 24 fret guitar can play).
- Includes the precision **FLAME** guitar tuner.



The **sonuus FLAME** tuner uses the same high-performance, ultra-fast, pitch-measurement technology used in our acclaimed hardware products, giving you a fast, accurate way to tune your guitar whilst making it fun with a unique "flame" tuning display.

FLAME is able to tune most instruments, including guitar and bass guitar, with a wide note detection range spanning from E1 (low E on a 4-string bass) to Bb6 (higher than a 24 fret guitar can play). Chromatic note detection ensures that any note can be tuned, regardless of the tuning of your instrument.



# FLAME app

Precision Guitar Tuner for iOS





# i2M musicport®

## USB MIDI Converter & Hi-Z USB Audio Interface For All Instruments & Voice

- Low-noise 16-bit, 44.1/48kHz digital audio with Hi-Z (10MΩ) preamp
- Any musical instrument can be used as a solo MIDI instrument
- Optimised switchable settings for:
  - + Guitar
  - + 4-string Bass Guitar
  - + 5-string Bass Guitar
  - + Voice / Wind
- No instrument modifications or special pickups required (standard 1/4" jack)
- Very low latency & ultra-fast MIDI tracking (the fastest on the planet)
- Robust note detection minimises wrong notes
- Ultra-fast and accurate MIDI pitch-bend
- Class-compliant USB (no drivers required)
- Ultra-compact, lightweight and portable
- USB bus-powered

**Andrew Gouché**  
(Bass Player, Prince)

## The new way to connect your musical instruments to your computer or iPad

The **i2M musicport** combines a great-sounding, high-impedance audio interface with very fast, low-latency, monophonic MIDI conversion that doesn't require special pickups to be mounted on your instrument.

Designed particularly for guitar and bass, it works with most musical instruments including the human voice.

Now you can record great sounding tracks and play synthesizers and samplers the way you have always wanted to: by using your favourite instrument.

Fine nuances of your playing are captured by the **i2M musicport**: note velocity is determined from how hard you play; and subtle vibrato and bends are converted to ultra-accurate pitch-bend messages with virtually no latency. Everything from the emotional subtlety of a 'cello solo to the most extreme use of a guitar's whammy bar are tracked flawlessly.



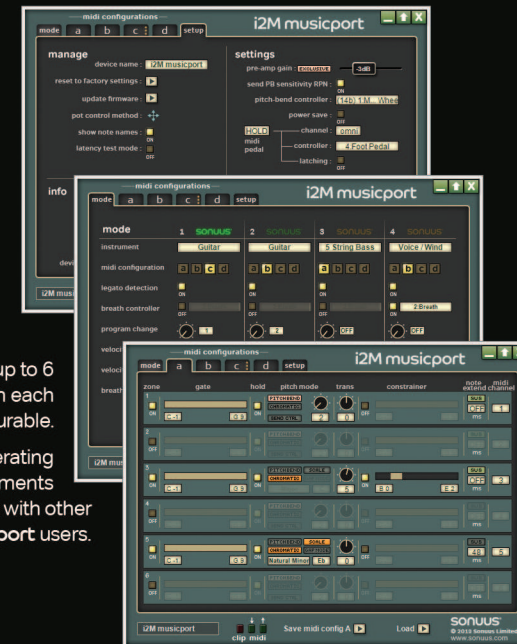
**Quick Start Video Guide**  
<http://sonuus.com/QLA>



The **i2M musicport** features a very flexible and powerful MIDI converter architecture that can be configured using the free Desktop Editor Software.

6 zones enable MIDI to be sent on up to 6 MIDI channels simultaneously, with each zone being independently configurable.

You can customise each of the operating modes for your particular requirements and exchange these settings with other **i2M musicport** users.



*"These highly affordable little boxes do clean, reliable real-time pitch-to-MIDI in as simple a package as you can imagine...I can heartily recommend these units."*  
**Sound On Sound (November 2011)**



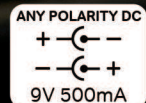


# Wahoo®

Wah pedal | touch wah | auto wah | vocal vowel wah  
pitch wah | funky bass envelope filter | stepped filter  
phaser | overdrive | synth sounds...

...and everything in between

- Warm, organic, pure-analogue tone
- Dual-filter design for more depth and vowels
- Filter specification:
  - + band-pass & low-pass (24dB/octave)
  - + cutoff frequency = 10 Hz – 4000Hz
  - + Q = 0 (subtle) – 100 (self-oscillating)
  - + DRIVE to add dirt and growl
  - + 19 response curves to tailor the feel
- 100 factory presets | 100 user presets
- Groundbreaking pitch-tracking filter effects
- Patent-pending pedal sensor that will never wear out
- Transparent-True-Bypass switching
- Future-proof upgradeable firmware
- Robust lightweight cast aluminium case
- 9VDC, 4 x AA batteries, USB powered



## Doug Wimbish

(Bass Player, Living Colour)

## Analogue Dual-Filter/Wah Stomp Box For Guitar & Bass

Wah-wah and filter pedals are usually designed for a particular instrument (e.g., guitar or bass) and for a narrow range of sounds. Digital emulations give you more flexibility but these lack the warmth and character of a good analogue filter.

At Sonuus we do things differently.

The **Wahoo** combines two beautiful-sounding analogue filters with digital control giving you full access to a sonic palette previously only possible to skilled analogue circuit designers.

With 100 wonderful factory presets you may never need to adjust the sound, but if you do, an intuitive control panel lets you instantly tweak settings and store these to the 100 user preset slots.

A USB connection lets you synchronise LFOs to MIDI clock and use the free Desktop Editor software to graphically configure presets with ease.

*"The Wahoo pedal does everything you wished a standard wah wah pedal could do. I've found it inspirational in the writing and recording process — something that rarely occurs nowadays with a new bit of equipment."* **Adam Wakeman (Black Sabbath)**

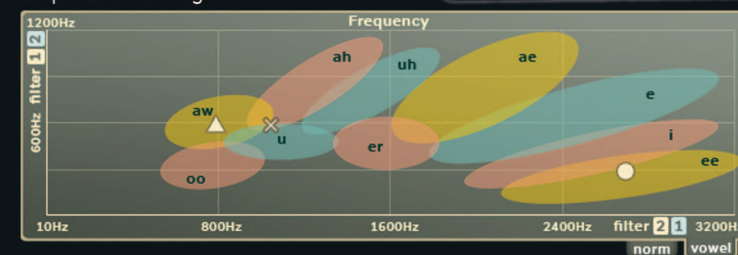
Desktop Editor software for Windows and OSX



Quick Start Video Guide  
<http://sonuus.com/QLD>



By using two filters, the **Wahoo** can create all the vowel sounds to give you the most vocal wah you've ever heard. Using the Desktop Editor, making an "oo-ah" into an "aw-ee" is a simple click and drag.





# Volum<sup>®</sup>

## Gate | Pedal-controlled compressor | Limiter | Dual-LFO tremolo | Volume pedal | Signal booster

The **Volum** is a volume-based multi-effect stomp box with a digitally controlled high-fidelity pure-analogue signal chain. Constant high-voltage (>30V) analogue power rails ensure high-headroom with low distortion and low noise for maximum signal clarity. A high-bandwidth fully-analogue signal path preserves the tone of your instrument. Digital control gives you the ability to store presets, configure the pedal over USB and remotely-control the effects via MIDI.

The effects chain comprises five effects (noise gate, compressor, dual-LFO tremolo, volume control and limiter) which can be used in any combination.

In summary: an innovative boutique pedal that's built like a tank and sounds superb.

- Studio-grade VCA
- Factory presets and 100 user presets
- Noise gate, compressor, dual-LFO tremolo, volume, limiter
- Beautifully transparent compressor with unique pedal-control (FluidDynamics™)
- Smooth tremolo with multiple waveforms with MIDI clock sync
- Triggered fades and ADSR envelopes
- Control effects by pedal, envelope or MIDI
- 100dB cut | 40dB boost
- Transparent-True-Bypass or Buffered Bypass
- Patent-pending pedal sensor that will never wear out
- Future-proof upgradeable firmware
- Robust lightweight cast aluminium case
- Can be used as a USB-MIDI interface
- 9VDC, 4 x AA batteries, USB powered

### Quick Start Video Guide

<http://sonuus.com/QLC>



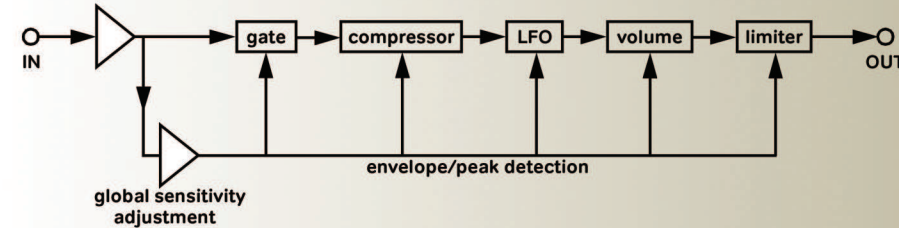
PURE ANALOGUE  
DIGITAL CONTROL

TRANSPARENT  
True Bypass



ANY POLARITY DC  
+ -  
- +  
9V 500mA

## Analogue Volume Effects Stomp Box For Guitar & Bass



Desktop Editor software for Windows and OSX



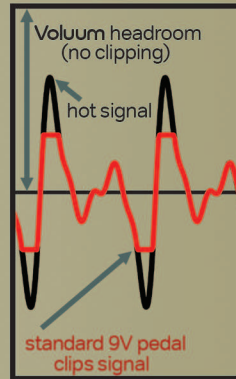
With both USB-MIDI and standard 5-pin MIDI connections, the **Volum** was designed to be connected!

Any effect that can be controlled by the pedal can also be controlled by MIDI messages allowing you to automate effects or remotely control them in real-time. Program change messages can also be sent to the **Volum** to select the effects you need for particular songs.

It also functions as a USB-MIDI interface.

### Extreme Headroom

With high-output (hot) pickups, it's not unusual for effects pedals to clip the signal. This happens when the voltage range produced by the pickup is larger than the pedal's power supply. The **Volum** includes a special booster circuit to ensure extreme headroom regardless of the power source used.



EDITOR'S CHOICE AWARD  
Music Inc Magazine





# sonuus®



/sonuus



/sonuusOfficial



/sonuusMusic

## www.sonuus.com

Sonuus Limited, St Neots, Cambridge, England, UK.

sonuus, i2M musicport, Wahoo, Volumm are registered trademarks of Sonuus Limited. All other trademarks contained herein are the property of their respective owners.

Contents and imagery subject to change without notice. Sonuus products are designed and engineered in the UK, made in China. © 2015 Sonuus Limited.